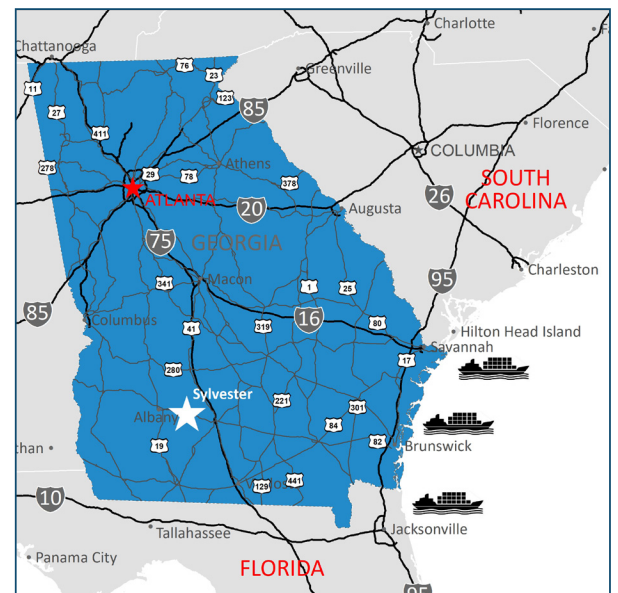




## PROPERTY DESCRIPTION

- ◆ 78 Acre Industrial Park
- ◆ 55 Available Acres
- ◆ 2800 + or - sq. ft of office space
- ◆ 38000 + or - sq. ft of warehouse space
- ◆ Zoned Industrial
- ◆ Industrial Park Occupants:
  - Bldg 103 - Vacant Warehouse
  - Bldg 101 - Scales Systems and Automation

## 55+ AVAILABLE ACRES



**Karen Rackley, Executive Director**  
Worth County Economic Development Authority  
229.776.7599 | [worthcoeda@bellsouth.net](mailto:worthcoeda@bellsouth.net) | [chooseworth.com](http://chooseworth.com)

**WORTH COUNTY**  
Economic Development Authority





# STRATEGICALLY LOCATED

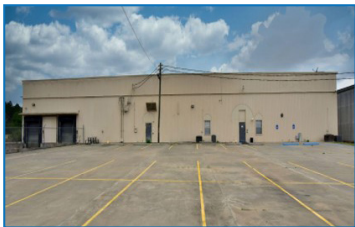
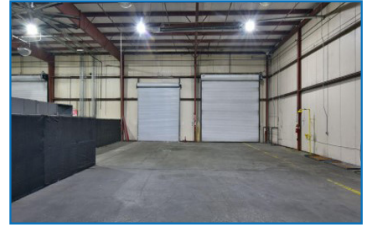
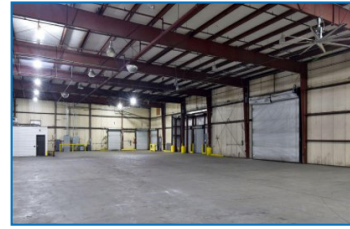
# WORTH INDUSTRIAL COMPLEX WEST

## AREA WORKFORCE

Sylvester | Worth County, GA | 50 mile radius

Population	473,568
Available Workforce	208,714
Households	174,820
Avg. Household Income	\$58,305
Median Age	38.1

Sources: JobsEQ, U.S. Census Bureau Population Estimates 2020, and U.S. Census Bureau American Community Survey 5-Year Estimates 2015-2019



## TRANSPORTATION

### Highways

US Highway 82 .....	Adjacent
Interstate 75 .....	15 miles

### Airports

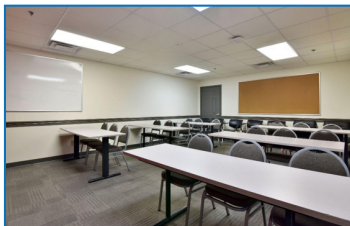
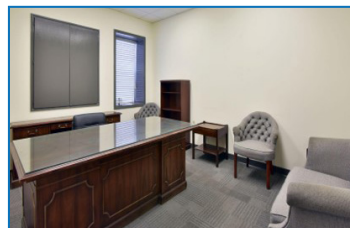
Sylvester Airport .....	5 miles
Southwest GA Regional (Albany) .....	25 miles
Hartsfield Jackson Intl Airport .....	167 miles

### Ports

Cordele Intermodal Services .....	34 miles
Port of Brunswick .....	152 miles
Port of Savannah .....	200 miles

## UTILITY INFRASTRUCTURE

Electricity:	Georgia Power
Water:	City of Sylvester
Gas:	City of Sylvester
Sewer:	Septic
Fiber:	City of Sylvester / At&T



**Karen Rackley, Executive Director**

Worth County Economic Development Authority

229.776.7599 | worthcoeda@bellsouth.net | chooseworth.com

**WORTH COUNTY**  
Economic Development Authority

