

**W&A
Engineering**

CIVIL ENGINEERING • LANDSCAPE ARCHITECTURE
SURVEYING • SOIL AND ENVIRONMENTAL CONSULTING
TRAFFIC ENGINEERING • ECONOMIC DEVELOPMENT

2478 Daniels Bridge Road, Suite 161, Athens, GA 30606
P: (706) 310-0400 • F: (706) 310-0411
www.waengineering.com

WORTH COUNTY GRAD SITE

SEABROOK DR. & GA HWY 82 - WORTH COUNTY, GEORGIA

197.26 ACRES

PLAN TYPE: AERIAL EXHIBIT

PROJECT NO: 19077

SCALE: 1"=400'

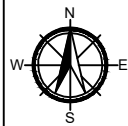
0

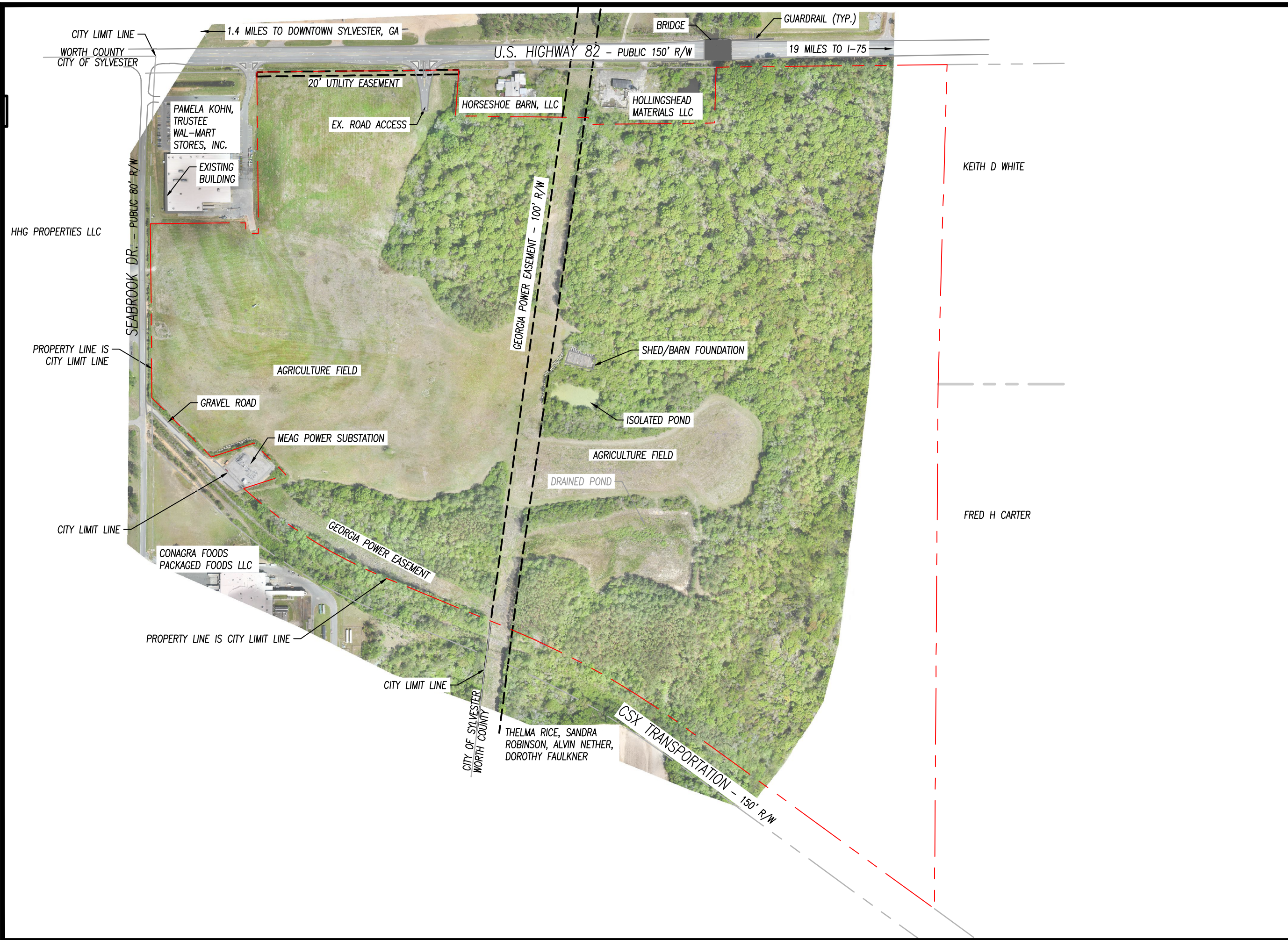
200

400

800

DATE: 4/30/2019





WORTH COUNTY GRAD SITE

SEABROOK DR. & GA HWY 82 - WORTH COUNTY, GEORGIA
197.26 ACRES

PLAN TYPE: AERIAL EXHIBIT

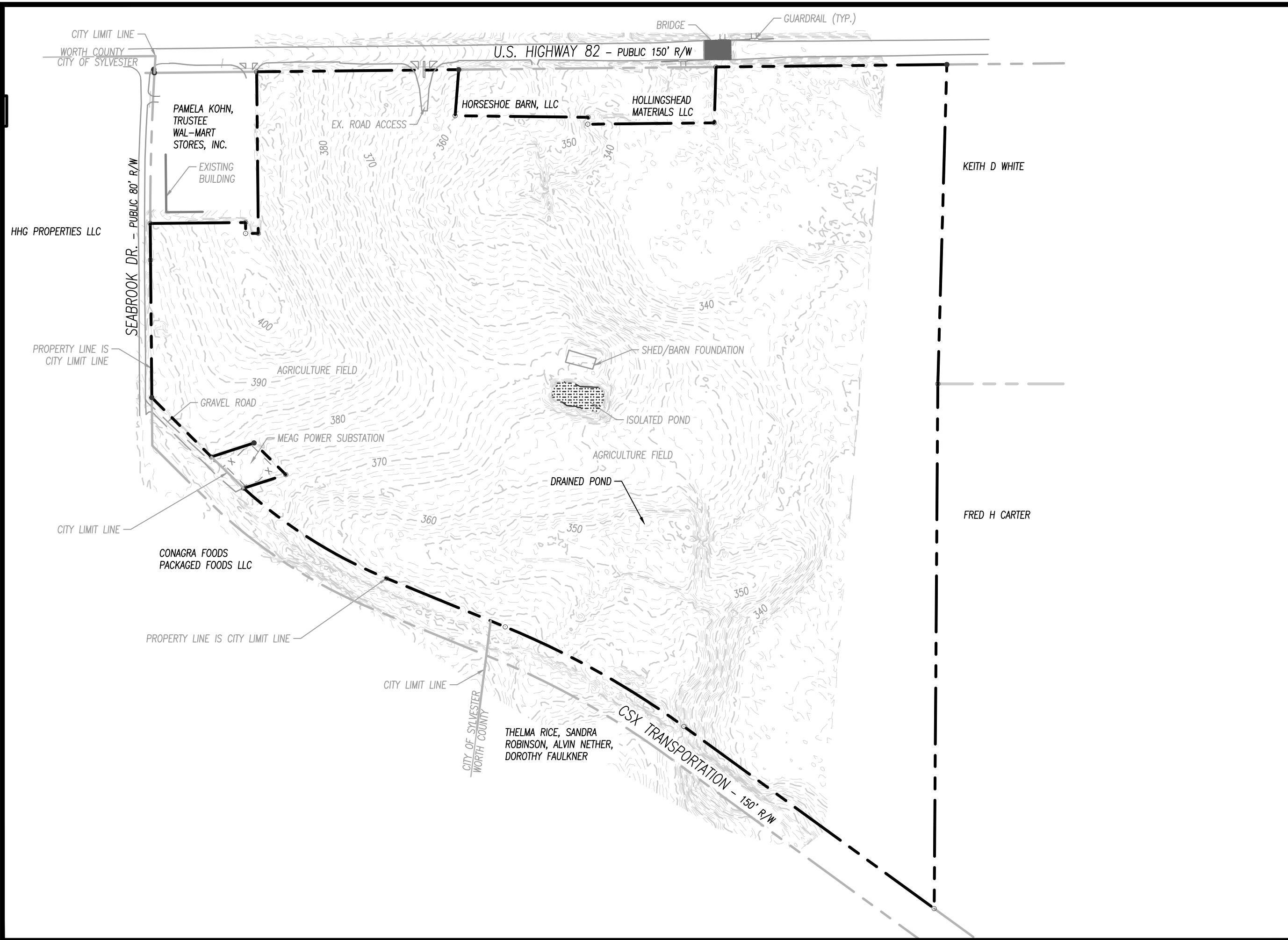
PROJECT NO: 19077
DATE: 4/30/2019

SCALE: 1"=400'

W&A Engineering


CIVIL ENGINEERING • LANDSCAPE ARCHITECTURE
 SURVEYING • SOIL AND ENVIRONMENTAL CONSULTING
 TRAFFIC ENGINEERING • ECONOMIC DEVELOPMENT

2470 Daniels Bridge Road, Suite 161, Athens, GA 30606
 P: (706) 310-0400 • F: (706) 310-0411
www.waengineering.com



WORTH COUNTY GRAD SITE


SEABROOK DR. & GA HWY 82 - WORTH COUNTY, GEORGIA
197.26 ACRES




PROJECT NO: 19077
DATE: 4/30/2019

PLAN TYPE: TOPOGRAPHY EXHIBIT

SCALE: 1"=400'



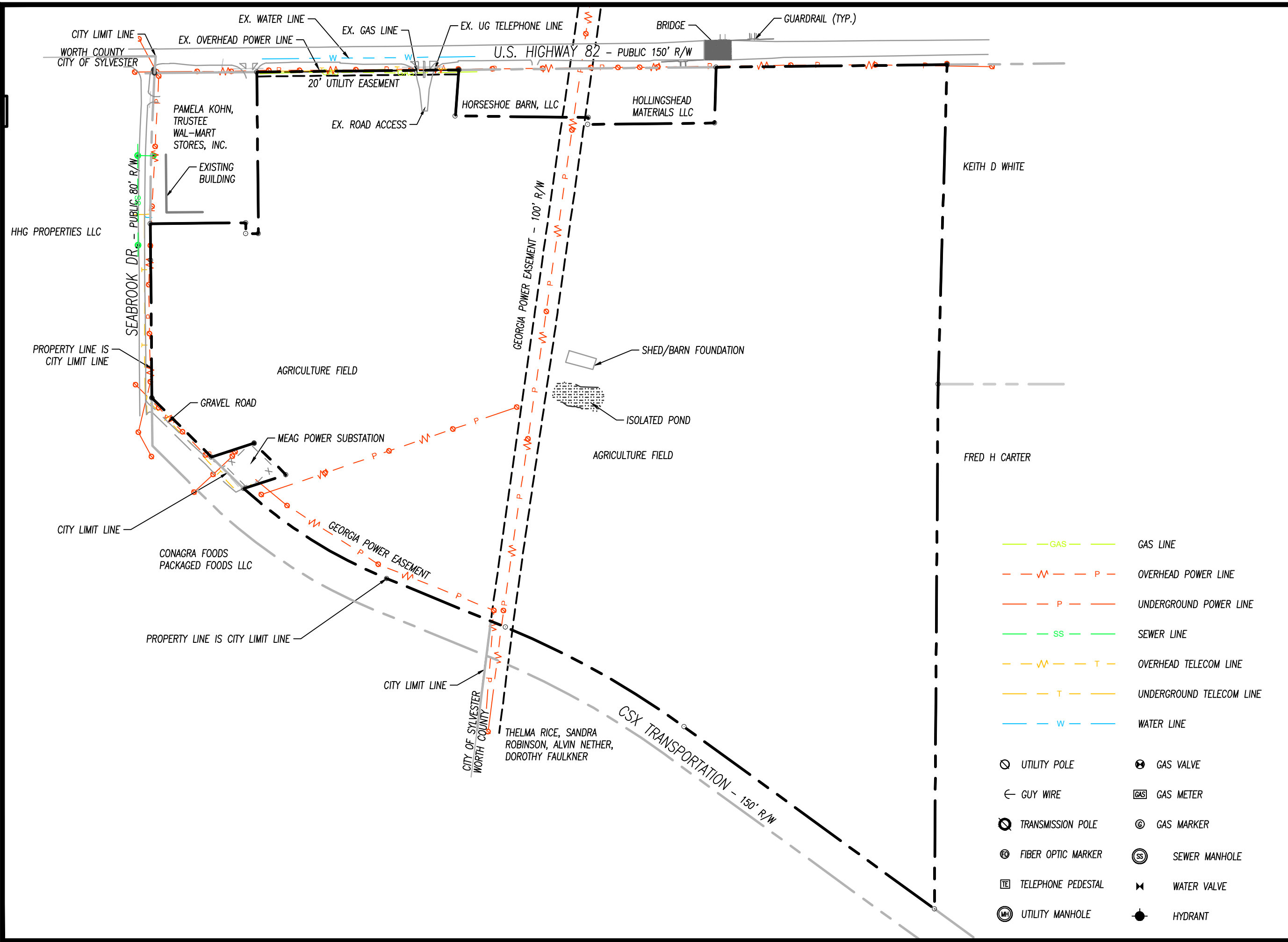


W&A Engineering

CIVIL ENGINEERING • LANDSCAPE ARCHITECTURE
SURVEYING • SOIL AND ENVIRONMENTAL CONSULTING
TRAFFIC ENGINEERING • ECONOMIC DEVELOPMENT

2470 Daniels Bridge Road, Suite 161, Athens, GA 30606
P: (706) 310-0400 • F: (706) 310-0411
waeengineering.com

X:\Projects\19077 - Worth County GRAD Site Design Construction\19077.dwg 5:28:19 10/3/2019 AM mozier



- | | | | |
|--|------------------------|--|--------------------------|
| | GAS LINE | | SEWER LINE |
| | OVERHEAD POWER LINE | | OVERHEAD TELECOM LINE |
| | UNDERGROUND POWER LINE | | UNDERGROUND TELECOM LINE |
| | WATER LINE | | UTILITY POLE |
| | GUY WIRE | | GAS VALVE |
| | TRANSMISSION POLE | | GAS METER |
| | FIBER OPTIC MARKER | | GAS MARKER |
| | TELEPHONE PEDESTAL | | SEWER MANHOLE |
| | UTILITY MANHOLE | | WATER VALVE |
| | | | HYDRANT |

WORTH COUNTY GRAD SITE

SEABROOK DR. & GA HWY 82 - WORTH COUNTY, GEORGIA
197.26 ACRES

PLAN TYPE: UTILITY EXHIBIT

PROJECT NO: 19077

DATE: 4/30/2019

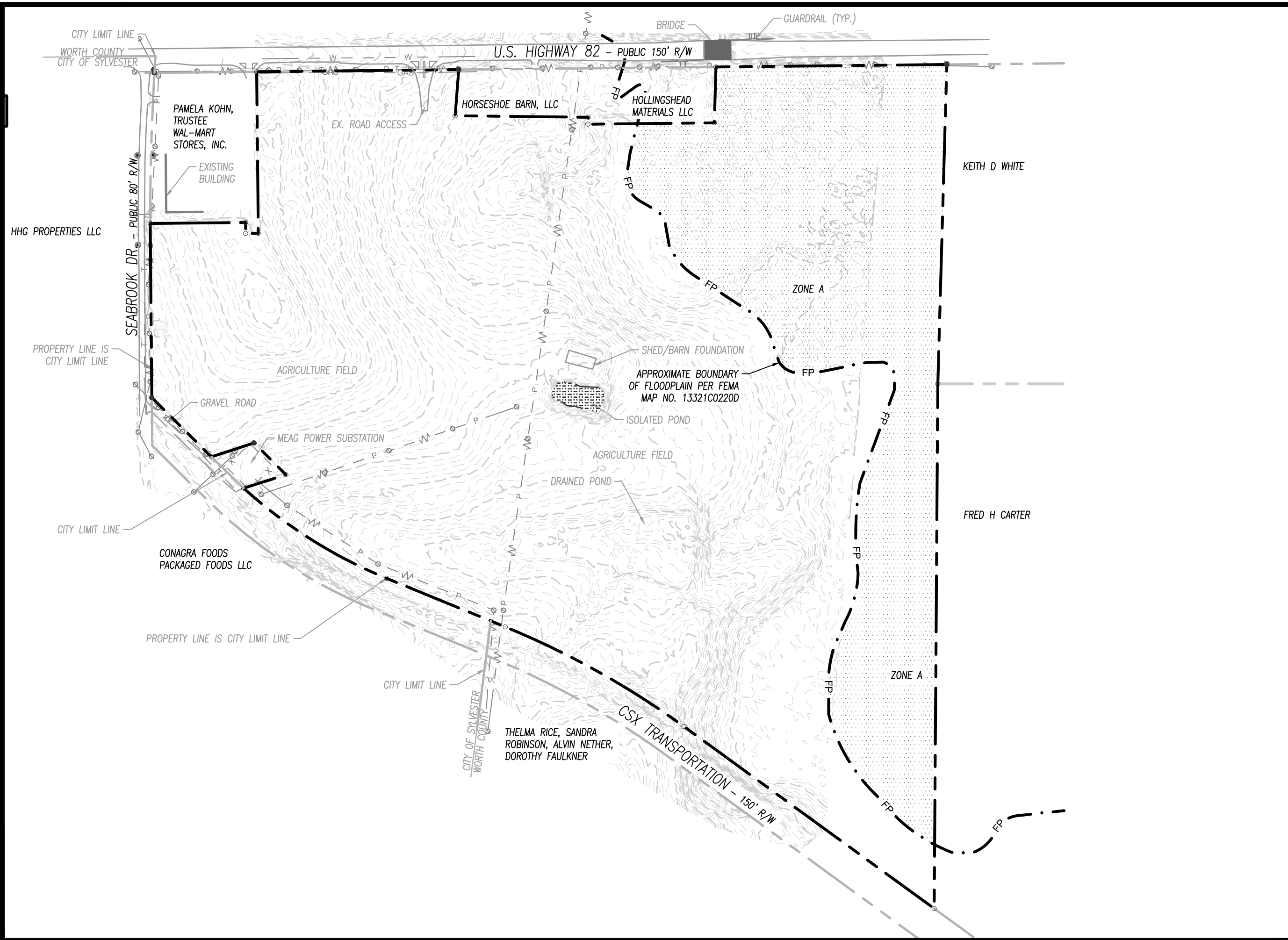
SCALE: 1"=400'

W&A Engineering

CIVIL ENGINEERING • LANDSCAPE ARCHITECTURE
SURVEYING • SOIL AND ENVIRONMENTAL CONSULTING
TRAFFIC ENGINEERING • ECONOMIC DEVELOPMENT

2470 Daniels Bridge Road, Suite 161, Athens, GA 30606
P: (706) 310-0400 • F: (706) 310-0411
waeengineering.com

X:\Projects\19077 - Worth County GRAD Site Design\Construction-19077.dwg 5:28:19 01:40:05 PM mozier



WORTH COUNTY GRAD SITE

SEABROOK DR. & GA HWY 82 - WORTH COUNTY, GEORGIA
197.26 ACRES

PROJECT NO: 19077
DATE: 4/30/2019

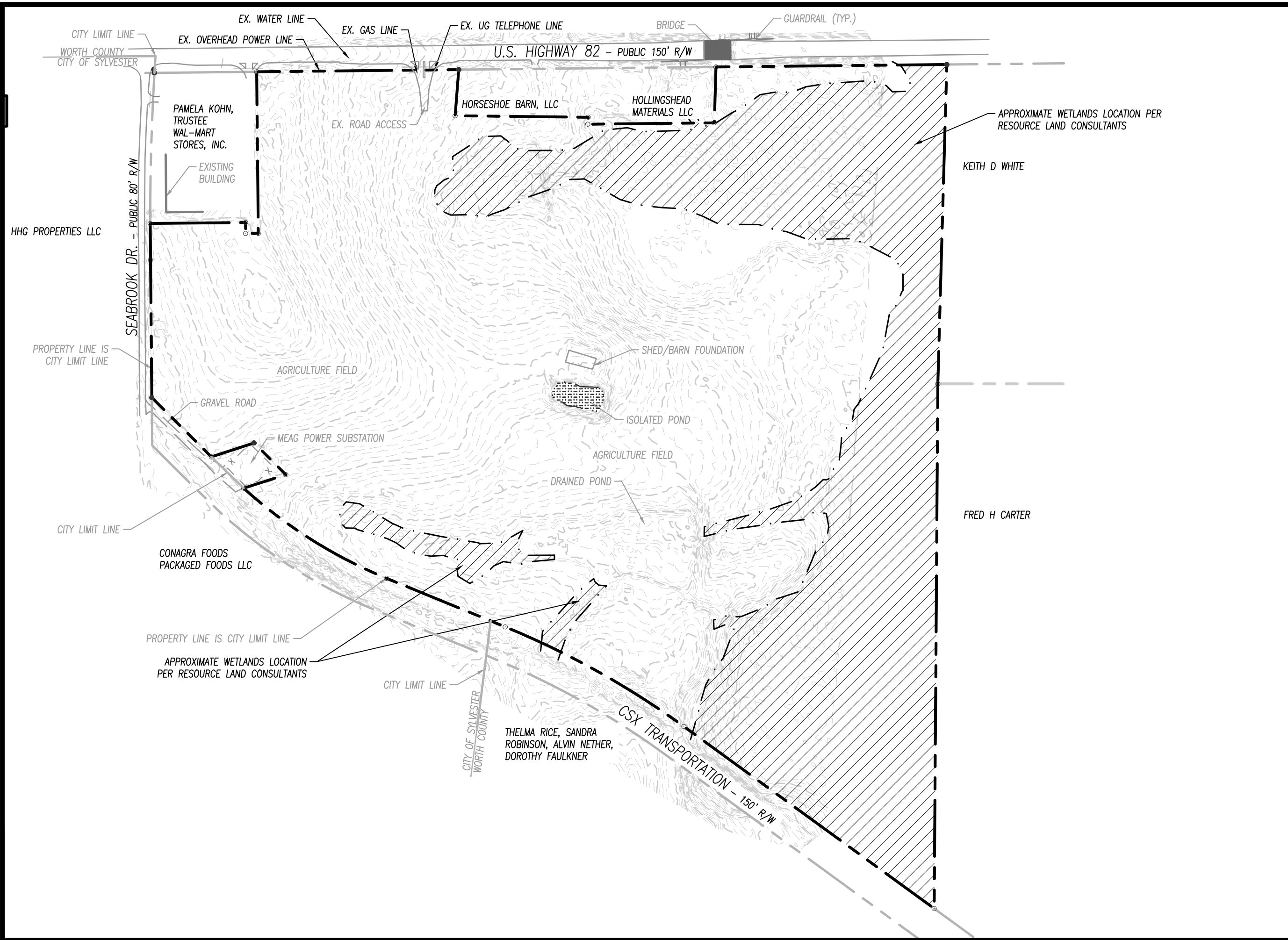
PLAN TYPE: FLOODPLAIN EXHIBIT

SCALE: 1"=400'

CIVIL ENGINEERING • LANDSCAPE ARCHITECTURE
SURVEYING • SOIL AND ENVIRONMENTAL CONSULTING
TRAFFIC ENGINEERING • ECONOMIC DEVELOPMENT

2470 Daniels Bridge Road, Suite 161, Athens, GA 30606
P: (706) 310-0400 • F: (706) 310-0411
www.waengineering.com

X:\Projects\19077 - Worth County GRAD Site Design Construction\19077.dwg 5:28:19 10/3/2017 AM mozier



WORTH COUNTY GRAD SITE

SEABROOK DR. & GA HWY 82 - WORTH COUNTY, GEORGIA
197.26 ACRES


PROJECT NO: 19077

DATE: 4/30/2019

PLAN TYPE: WETLAND EXHIBIT

SCALE: 1"=400'

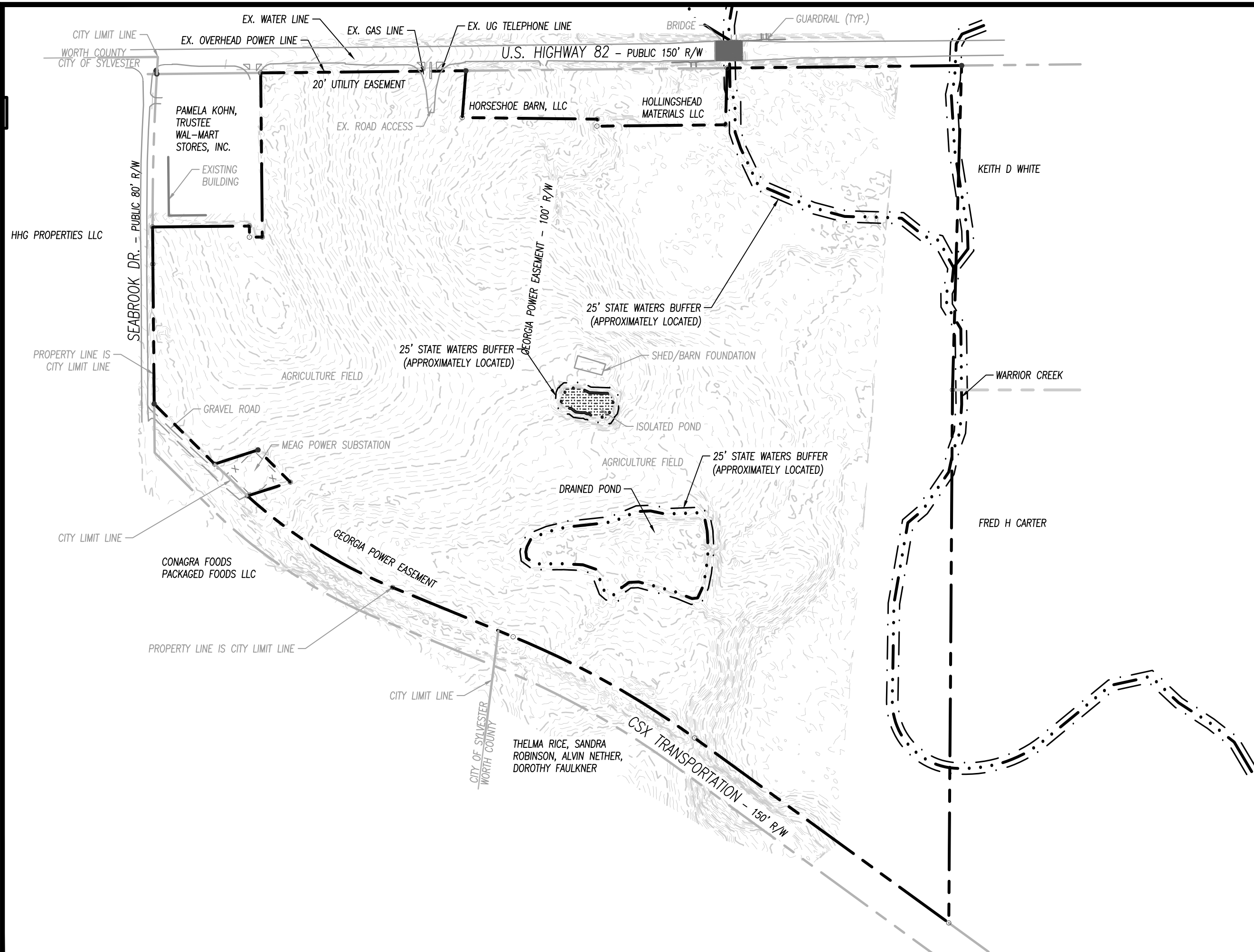




W&A Engineering

CIVIL ENGINEERING • LANDSCAPE ARCHITECTURE
SURVEYING • SOIL AND ENVIRONMENTAL CONSULTING
TRAFFIC ENGINEERING • ECONOMIC DEVELOPMENT

2470 Daniels Bridge Road, Suite 161, Athens, GA 30606
P: (706) 310-0400 • F: (706) 310-0411
waeengineering.com



WORTH COUNTY GRAD SITE

SEABROOK DR. & GA HWY 82 - WORTH COUNTY, GEORGIA
197.26 ACRES

PROJECT NO: 19077

DATE: 4/30/2019

PLAN TYPE: STATE WATERS EXHIBIT

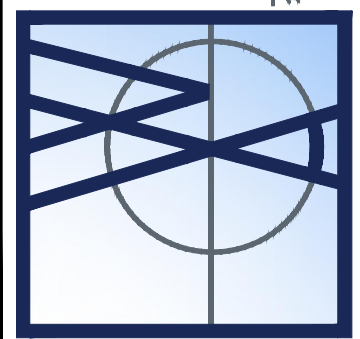
SCALE: 1"=400'
0 200 400 800

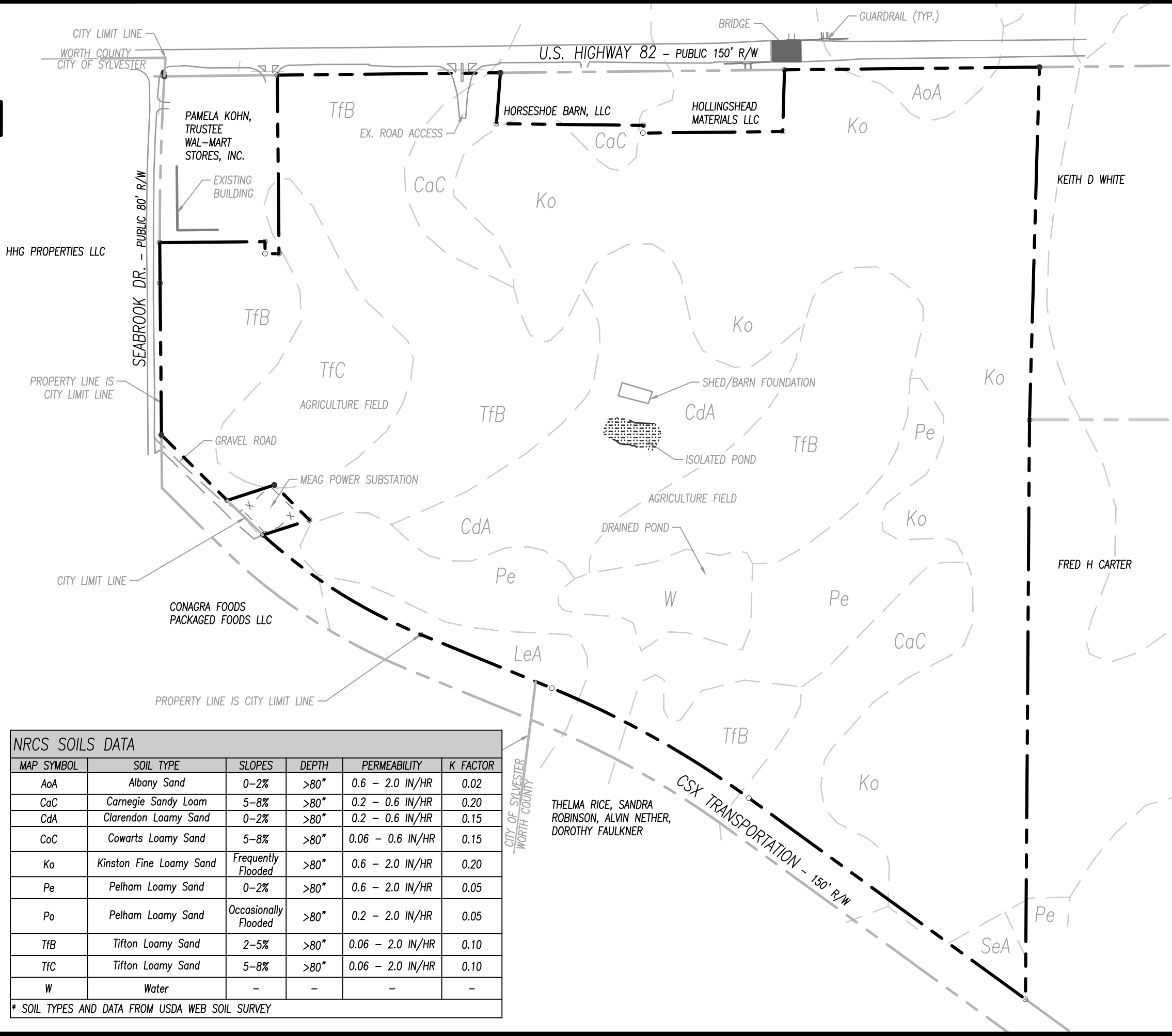


W&A Engineering

CIVIL ENGINEERING • LANDSCAPE ARCHITECTURE
SURVEYING • SOIL AND ENVIRONMENTAL CONSULTING
TRAFFIC ENGINEERING • ECONOMIC DEVELOPMENT

2470 Daniels Bridge Road, Suite 161, Athens, GA 30606
P: (706) 310-0400 • F: (706) 310-0411
waeengineering.com





NRCS SOILS DATA					
MAP SYMBOL	SOIL TYPE	SLOPES	DEPTH	PERMEABILITY	K FACTOR
AoA	Albany Sand	0-2%	>80"	0.6 - 2.0 IN/HR	0.02
CaC	Carnegie Sandy Loam	5-8%	>80"	0.2 - 0.6 IN/HR	0.20
CdA	Clarendon Loamy Sand	0-2%	>80"	0.2 - 0.6 IN/HR	0.15
CoC	Cowarts Loamy Sand	5-8%	>80"	0.06 - 0.6 IN/HR	0.15
Ko	Kinston Fine Loamy Sand	Frequently Flooded	>80"	0.6 - 2.0 IN/HR	0.20
Pe	Pelham Loamy Sand	0-2%	>80"	0.6 - 2.0 IN/HR	0.05
Po	Pelham Loamy Sand	Occasionally Flooded	>80"	0.2 - 2.0 IN/HR	0.05
TfB	Tifton Loamy Sand	2-5%	>80"	0.06 - 2.0 IN/HR	0.10
TfC	Tifton Loamy Sand	5-8%	>80"	0.06 - 2.0 IN/HR	0.10
W	Water	-	-	-	-

* SOIL TYPES AND DATA FROM USDA WEB SOIL SURVEY

WORTH COUNTY GRAD SITE

SEABROOK DR. & GA HWY 82 - WORTH COUNTY, GEORGIA
197.26 ACRES


PLAN TYPE: NRCS SOILS EXHIBIT

PROJECT NO: 19077

DATE: 4/30/2019

SCALE: 1"=400'


800
400
200
0

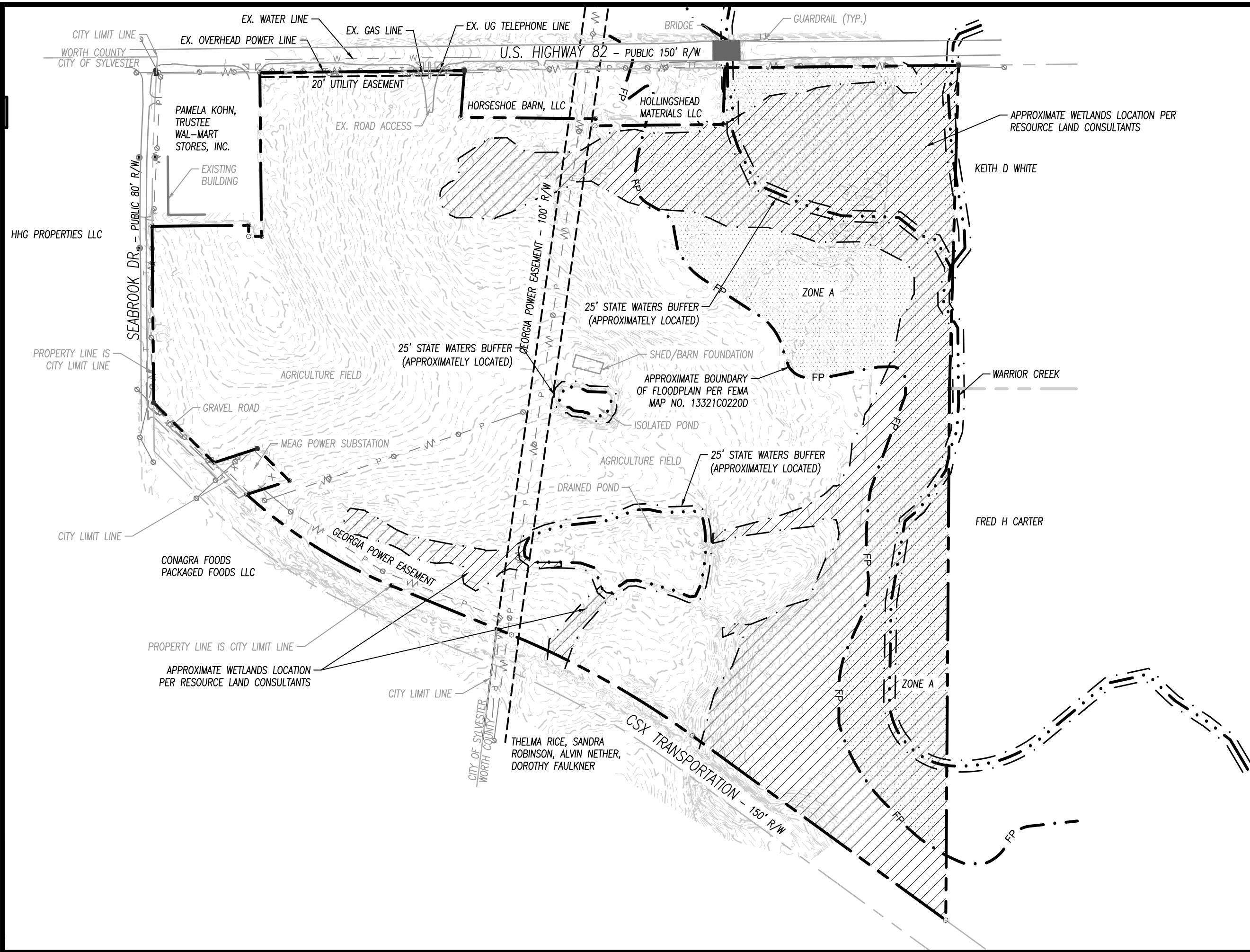


W&A Engineering

CIVIL ENGINEERING • LANDSCAPE ARCHITECTURE
SURVEYING • SOIL AND ENVIRONMENTAL CONSULTING
TRAFFIC ENGINEERING • ECONOMIC DEVELOPMENT

2470 Daniels Bridge Road, Suite 161, Athens, GA 30606
P: (706) 310-0400 • F: (706) 310-0411
waeengineering.com





WORTH COUNTY GRAD SITE

SEABROOK DR. & GA HWY 82 - WORTH COUNTY, GEORGIA
197.26 ACRES

PROJECT NO: 19077

DATE: 4/30/2019

PLAN TYPE: EXISTING CONDITIONS EXHIBIT

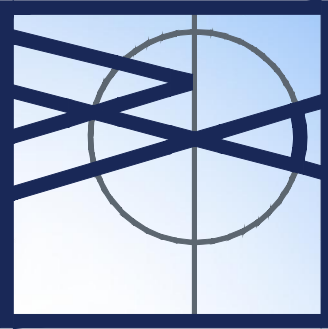
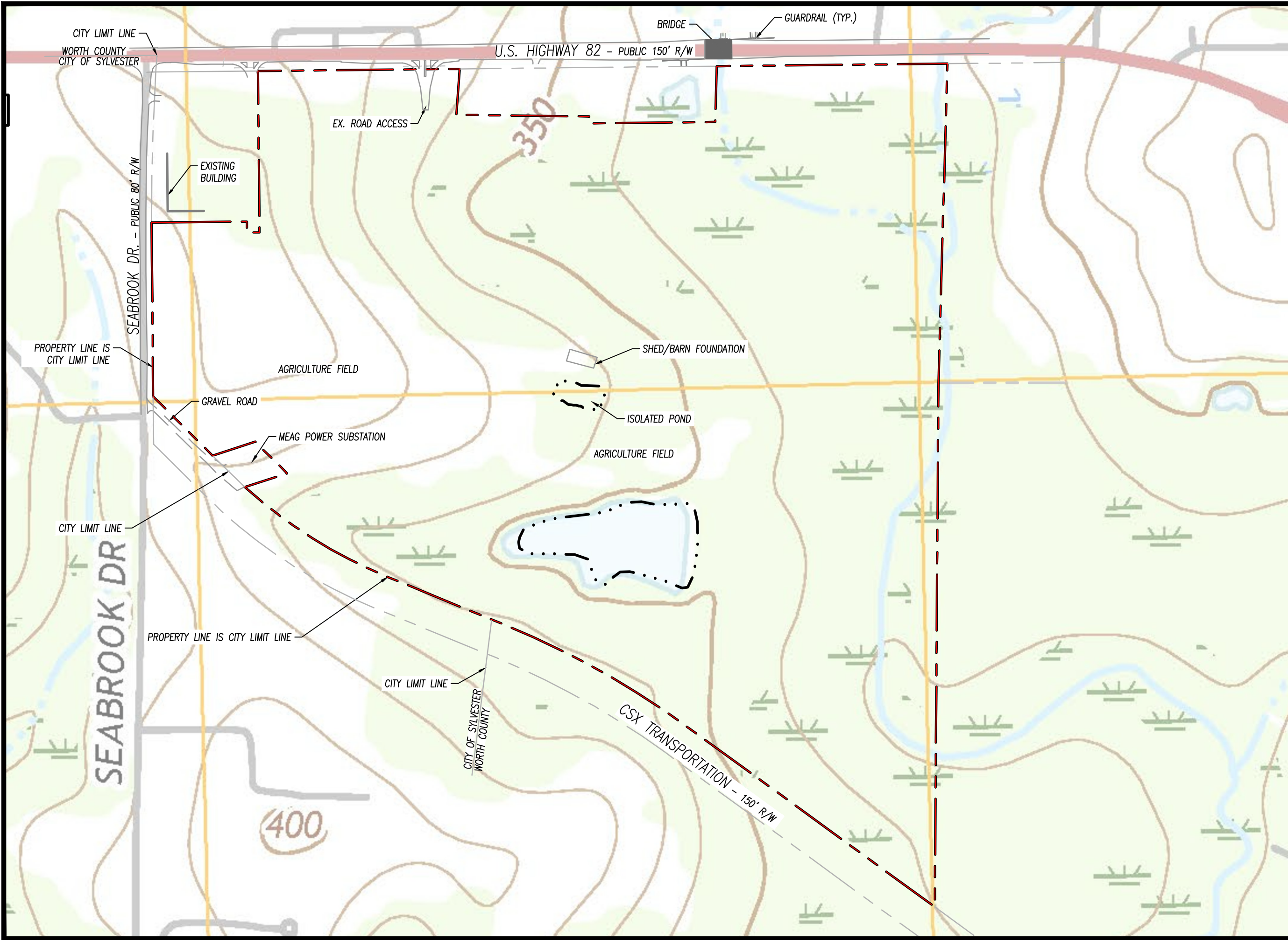
SCALE: 1"=400'



W&A Engineering

CIVIL ENGINEERING • LANDSCAPE ARCHITECTURE
SURVEYING • SOIL AND ENVIRONMENTAL CONSULTING
TRAFFIC ENGINEERING • ECONOMIC DEVELOPMENT

2470 Daniels Bridge Road, Suite 161, Athens, GA 30606
P: (706) 310-0400 • F: (706) 310-0411
waeengineering.com



W&A Engineering
 CIVIL ENGINEERING • LANDSCAPE ARCHITECTURE
 SURVEYING • SOIL AND ENVIRONMENTAL CONSULTING
 TRAFFIC ENGINEERING • ECONOMIC DEVELOPMENT
 2470 Daniels Bridge Road, Suite 161, Athens, GA 30606
 P: (706) 310-0400 • F: (706) 310-0411
 wvceengineering.com

WORTH COUNTY GRAD SITE

SEABROOK DR. & GA HWY 82 - WORTH COUNTY, GEORGIA
 197.26 ACRES

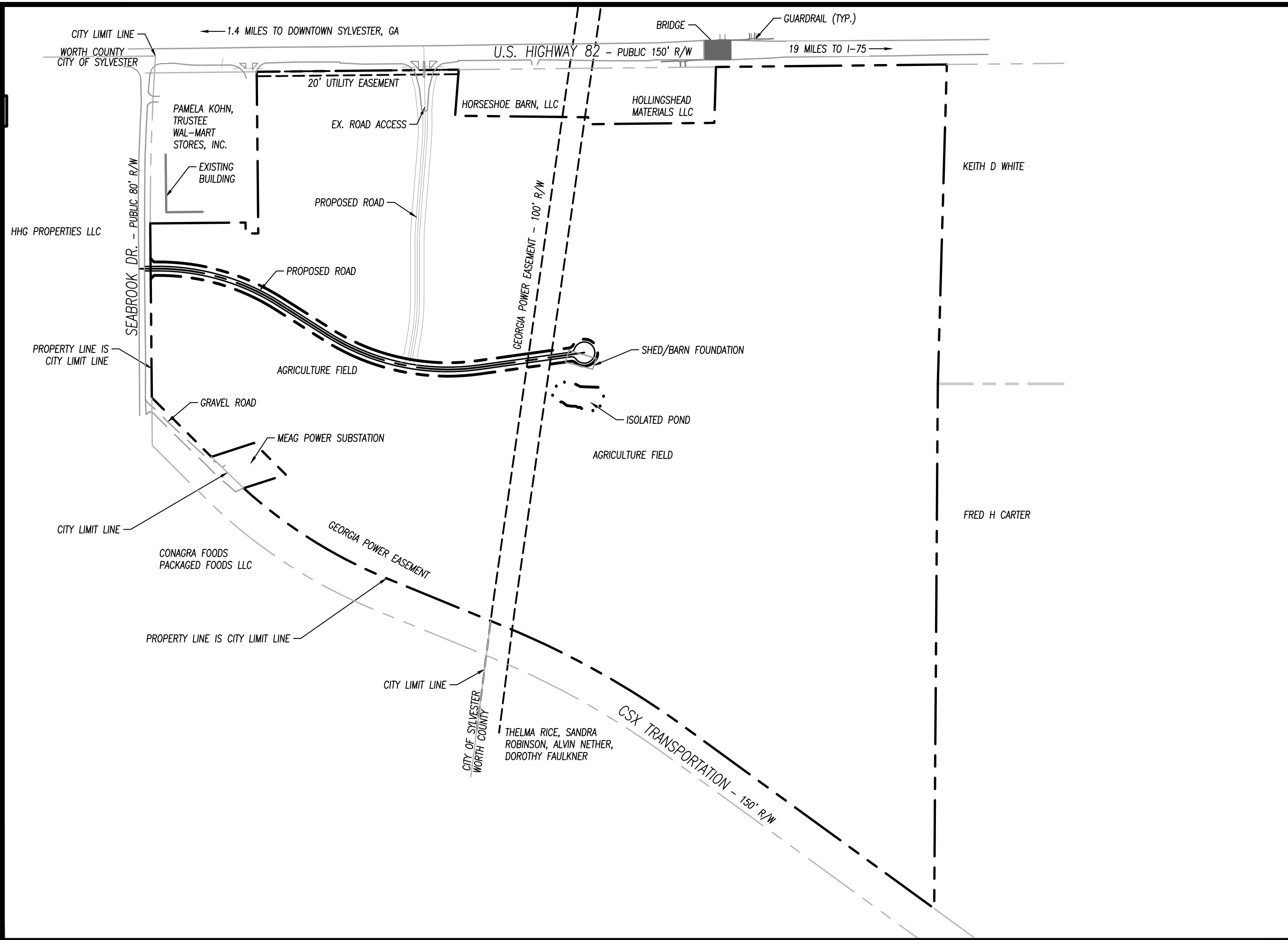
PLAN TYPE: USGS QUAD MAP EXHIBIT

PROJECT NO: 19077

DATE: 4/30/2019

SCALE: 1"=400'

0 200 400 800



WORTH COUNTY GRAD SITE

SEABROOK DR. & GA HWY 82 - WORTH COUNTY, GEORGIA
197.26 ACRES

PLAN TYPE: CONCEPT PLAN

SCALE: 1"=400'

PROJECT NO: 19077

DATE: 4/30/2019

2470 Daniels Bridge Road, Suite 161, Athens, GA 30606
P: (706) 310-0400 • F: (706) 310-0411
www.waengineering.com

W&A Engineering
 CIVIL ENGINEERING • LANDSCAPE ARCHITECTURE
 SURVEYING • SOIL AND ENVIRONMENTAL CONSULTING
 TRAFFIC ENGINEERING • ECONOMIC DEVELOPMENT

WORTH COUNTY GRAD SITE Design Construction-19077.dwg 5:28:19 10:36:56 AM mozier