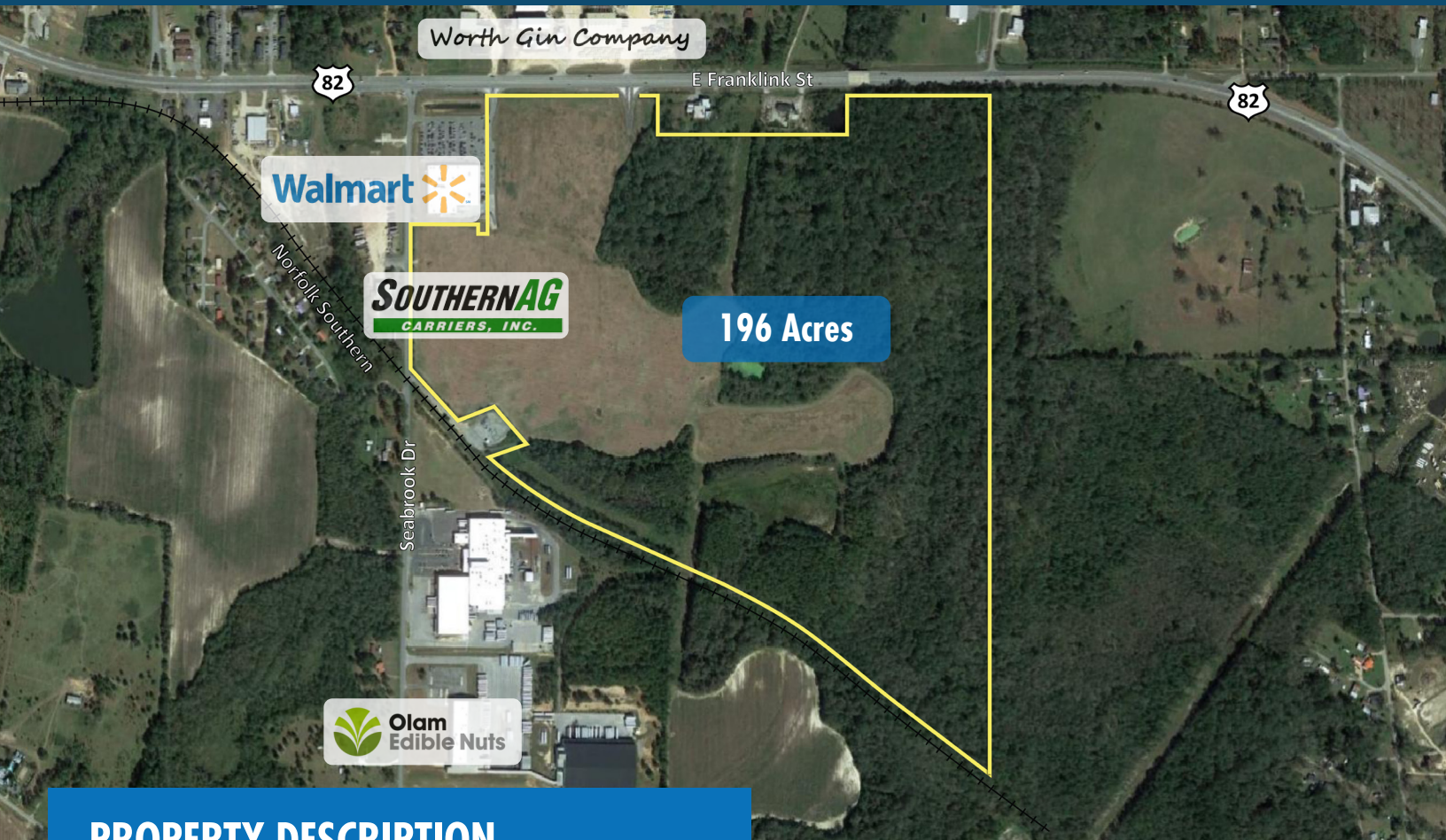


WORTH INDUSTRIAL COMPLEX EAST

1114 East Franklin Street
Sylvester, GA 31791 | Worth County



PROPERTY DESCRIPTION

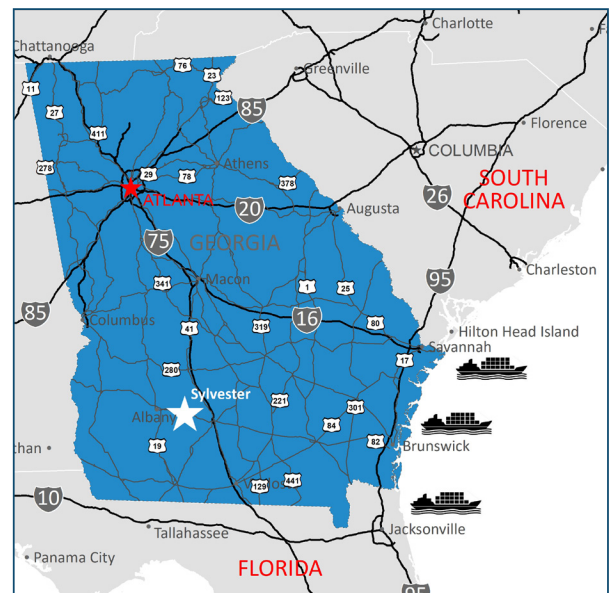
- ◆ 196 Acres
- ◆ Zoned Manufacturing and Commercial
- ◆ Owned by Worth County EDA
- ◆ Georgia Ready for Accelerated Development (GRAD) Certified Select.

GRAD
CERTIFIED
SELECT

- ◆ Phase I environmental assessment
- ◆ Preliminary geotechnical investigation
- ◆ Cultural & endangered species investigation
- ◆ Wetlands and stream delineation



STRATEGICALLY LOCATED
& GRAD CERTIFIED SELECT



Karen Rackley, Executive Director
Worth County Economic Development Authority
229.776.7599 | worthcoeda@bellsouth.net | chooseworth.com

WORTH COUNTY
Economic Development Authority





WORTH INDUSTRIAL COMPLEX EAST

1114 EAST FRANKLIN STREET
SYLVESTER, GA - 31791

AREA WORKFORCE

Sylvester | Worth County, GA | 50 mile radius

Population	471,602
Available Workforce	212,334
Households	184,439
Avg. Household Income	\$66,803
Median Age	38.2

Source: ESRI Estimates for 2022



TRANSPORTATION

Highways

US Highway 82	Adjacent
Interstate 75	15 miles

Airports

Sylvester Airport	5 miles
Southwest GA Regional (Albany)	25 miles
Hartsfield Jackson Intl Airport	167 miles

Ports

Cordele Intermodal Services	34 miles
Port of Brunswick	152 miles
Port of Savannah	200 miles

UTILITY INFRASTRUCTURE

Electricity:	City of Sylvester
Water:	City of Sylvester
Sewer:	City of Sylvester
Gas:	City of Sylvester



Karen Rackley, Executive Director
Worth County Economic Development Authority
229.776.7599 | worthcoeda@bellsouth.net | chooseworth.com

WORTH COUNTY
Economic Development Authority

